

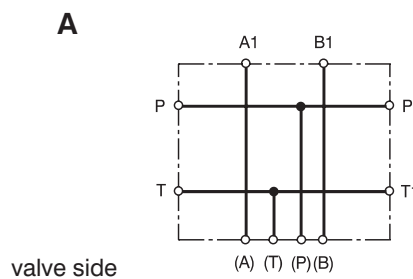
- For in-line mounting of hydraulic valves
- Parallel connection of ports P and T
- 1 ... 6 sections possible
- Installation dimensions size 10 to ISO 4401 and DIN 24 340-A10



**Ordering Code**

	<b>PD10</b> <span style="border: 1px solid black; display: inline-block; width: 15px; height: 15px; vertical-align: middle;"></span> <span style="border: 1px solid black; display: inline-block; width: 15px; height: 15px; vertical-align: middle;"></span> - <b>AL</b>		
In-line connecting plate			Material - aluminium
Nominal size			Number of sections
Connection see functional symbol	<b>A</b>	<b>1</b> <b>2</b> <b>3</b> <b>4</b> <b>5</b> <b>6</b>	1 section 2 sections 3 sections 4 sections 5 sections 6 sections

**Functional Symbol**



**Survey of types**

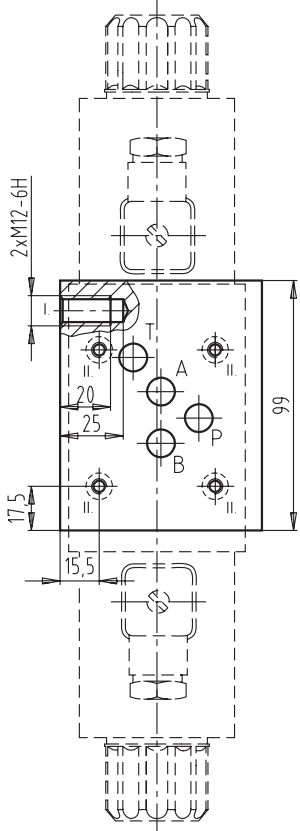
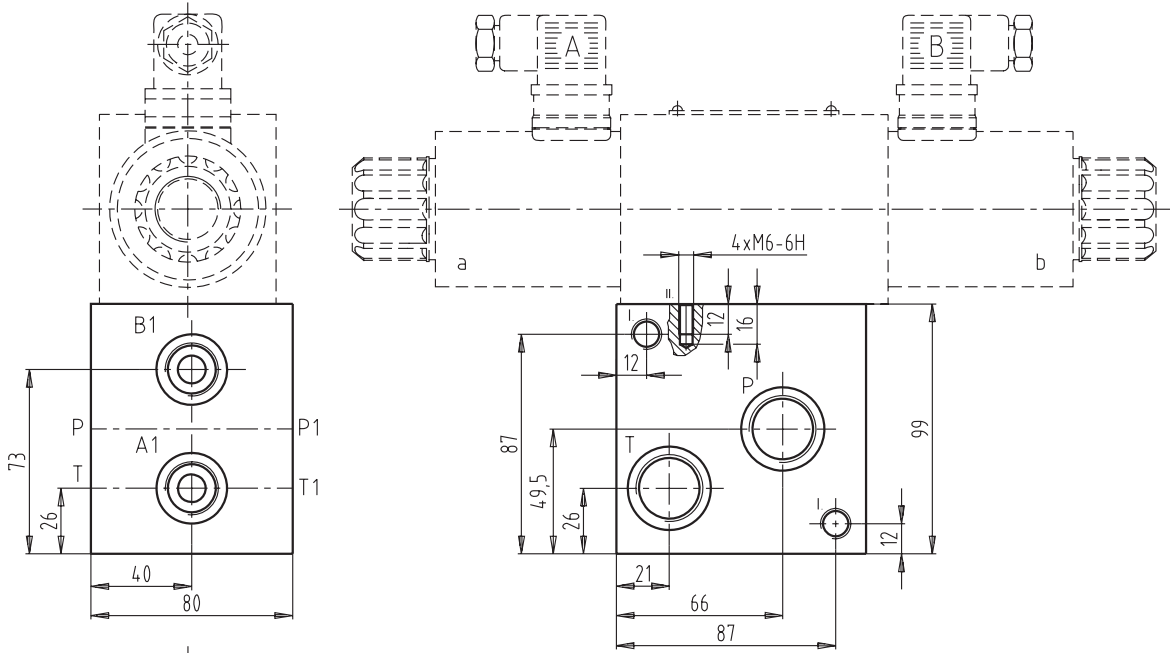
Type	Ordering number	Weight lbs (kg)
PD10A1-AL	16108400	5.10 (2.32)
<b>PD10A2-AL</b>	<b>16108500</b>	9.85 (4.48)
<b>PD10A3-AL</b>	<b>16108600</b>	14.55 (6.62)
PD10A4-AL	16108700	19.45 (8.85)
PD10A5-AL	16108800	24.24 (11.03)
PD10A6-AL	16108900	29.03 (13.21)

**FOR PREFERRED TYPES SEE BOLD TYPING IN ORDERING CODE AND TABLE OF SURVEY OF TYPES**

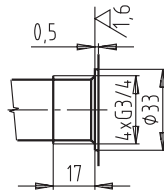
# Plate Dimensions

Dimensions in millimetres

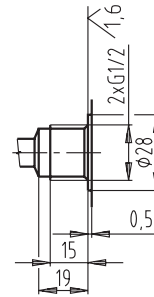
## Plates with 1 section



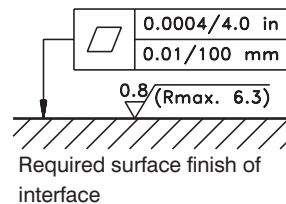
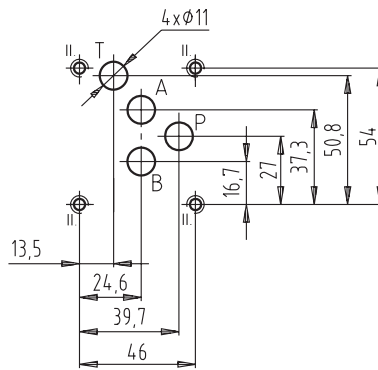
**P, T, P1, T1**



**A, B**



### Installation dimensions

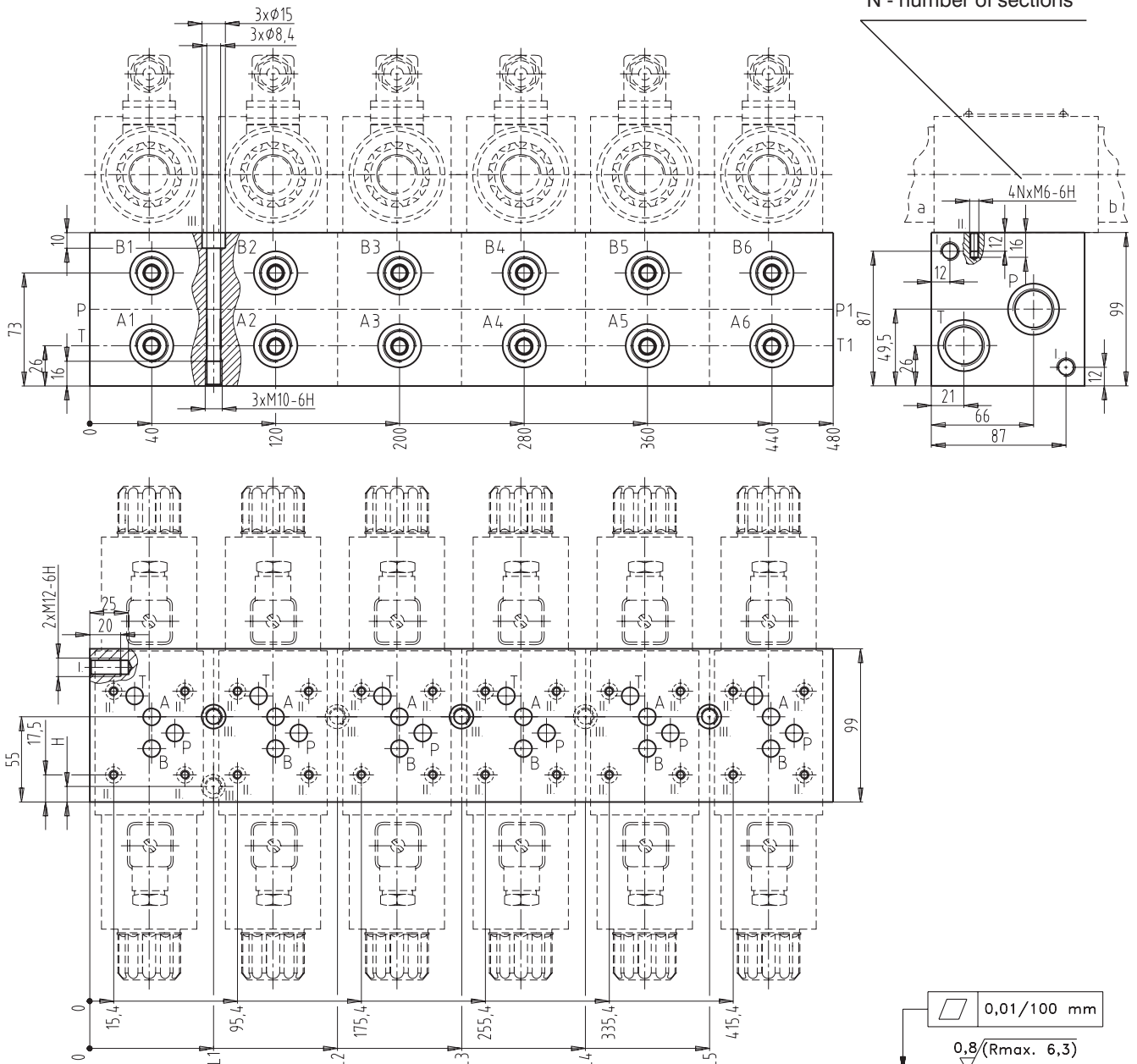


Port	A, B	P, T, P1, T1
Thread	G1/2	G3/4
Depth of thread	15	17
Counterbore	Ø28	Ø33
Depth of counterbore	0.5	0.5

# Plate Dimensions

Dimensions in millimetres

## Plates with 2 ... 6 sections



0,01/100 mm  
 0,8 (Rmax. 6,3)  
 Required surface finish of interface

Number of sections	L1	L2	L3	L4	L5	H
2	80	-	-	-	-	10
3	80	160	-	-	-	-
4	80	-	240	-	-	-
5	80	-	240	320	-	-
6	80	-	240	-	400	-
<b>Port</b>		<b>A1...A6, B1...B6</b>			<b>P, T, P1, T1</b>	
Thread		G1/2			G3/4	
Depth of thread		15			17	
Counterbore		Ø28			Ø33	
Depth of counterbore		0.5			0.5)	

## Caution!

- The packing foil is recyclable.
- The technical information regarding the product presented in this catalogue is for descriptive purposes only. It should not be construed in any case as a guaranteed representation of the product properties in the sense of the law.

ARGO-HYTOS s.r.o. CZ - 543 15 Vrchlabí  
Tel.: +420-499-403111, Fax: +420-499-403421  
E-mail: sales.cz@argo-hytos.com  
www.argo-hytos.com