

High Tonnage CYLINDERS R SERIES

100-565 Ton
Double-Acting,
Hydraulic-Return

High-tonnage, low cycle,
hydraulic return.

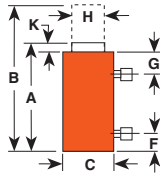
- Cylinders come standard with swivel caps to reduce the effects of off-center loading.
- Cylinders may be "dead-ended" without damage.
- Hard chrome plated, heat treated piston rod reduces wear on piston and gland nut.
- Built-in safety relief valve prevents over-pressurization of the retract circuit.
- Each cylinder has two 9796 3/8" NPTF female half couplers.



R1502D



R2806D



Cyl. Cap. (tons)	Stroke (mm)	Order No.	Oil Capacity (cm ³)		A Re-tracted Height (mm)	B Ex-tended Height (mm)	C Outside Dia. (mm)	F Base to Port (mm)	G Cylinder Top to Port (mm)	H Piston Rod Dia. (mm)	K Piston Rod Protrusion (mm)	Bore Dia. (mm)	Cylinder Effective Area (cm ²)	Metric Tons at 700 bar	Weight (kg)
			Push	Return											
100	50.8	R1002D	676	315	168.7	219.5	165.1	25.4	56.0	95.3	7.1	130.2	132.9	93.4	24.5
100	152.4	R1006D	2027	945	270.3	422.7	165.1	25.4	56.0	95.3	7.1	130.2	132.9	93.4	36.8
100	254.0	R10010D	3378	1574	371.9	625.9	165.1	25.4	56.0	95.3	7.1	130.2	132.9	93.4	49.0
150	50.8	R1502D	1007	485	188.9	239.7	204.8	31.8	57.2	114.3	7.5	158.8	198.0	139.1	43.1
150	152.4	R1506D	3021	1456	290.5	442.9	204.8	31.8	57.2	114.3	7.5	158.8	198.0	139.1	61.7
200	50.8	R2002D	1355	643	206.8	257.6	235.0	41.3	58.7	133.4	8.7	184.2	266.4	187.2	61.7
200	152.4	R2006D	4064	1929	308.4	460.8	235.0	41.3	58.7	133.4	8.7	184.2	266.4	187.2	84.9
200	254.0	R20010D	6773	3214	410.0	664.0	235.0	41.3	58.7	133.4	8.7	184.2	266.4	187.2	108.5
280	50.8	R2802D	1861	774	233.8	284.6	276.2	47.6	65.5	165.1	10.3	215.9	365.7	257.3	99.4
280	152.4	R2806D	5579	2322	335.4	447.8	276.2	47.6	65.5	165.1	10.3	215.9	365.7	257.3	134.8
280	254.0	R28010D	9299	3870	437.0	691.0	276.2	47.6	65.5	165.1	10.3	215.9	365.7	257.3	170.7
355	50.8	R3552D	2326	777	288.9	339.7	298.5	54.0	69.9	196.9	11.1	241.3	457.3	321.4	147.0
355	152.4	R3556D	6977	2332	390.5	542.9	298.5	54.0	69.9	196.9	11.1	241.3	457.3	321.4	191.1
430	50.8	R4302D	2840	977	312.7	363.5	330.2	63.5	75.0	215.9	11.9	266.7	558.6	392.7	199.3
430	152.4	R4306D	8521	2932	414.3	566.7	330.2	63.5	75.0	215.9	11.9	266.7	558.6	392.7	253.3
430	254.0	R43010D	14202	4887	515.9	769.9	330.2	63.5	75.0	215.9	11.9	266.7	558.6	392.7	305.5
565	50.8	R5652D	3710	1260	345.3	396.1	377.8	69.9	81.4	247.7	13.9	304.8	729.5	512.9	281.0
565	152.4	R5656D	11129	3779	446.9	599.3	377.8	69.9	81.4	247.7	13.9	304.8	729.5	512.9	350.4
565	254.0	R56510D	18548	6298	548.5	802.5	377.8	69.9	81.4	247.7	13.9	304.8	729.5	512.9	420.4

- Cylinders come standard with hardened caps.
- Optional swivel caps to reduce the effects of off-center loading.
- Cylinders may be "dead-ended" without damage.
- Safety relief valve prevents over-pressurization of the retract circuit.
- Each cylinder has two 9796 3/8" NPTF female half couplers.

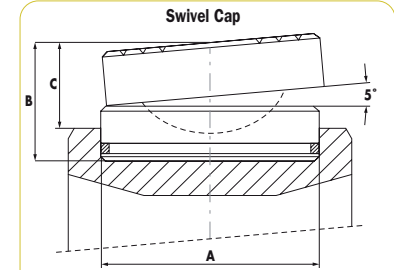
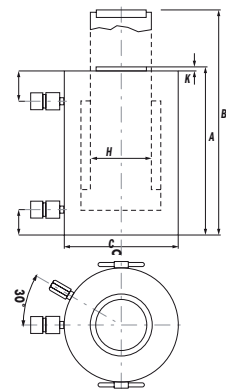


High Tonnage CYLINDER RC SERIES

740 & 1220
Double-Acting,
Hydraulic Return

High Tonnage Cylinders
Rugged And Reliable!

Double-Acting High Tonnage Cylinders



Order No.	Used with Cyl. Order No.	A (mm)	B (mm)	C (mm)	Product Wt. (kg)
2000822	RC740*D	200,1	78,7	55,9	19,3
2000823	RC965*D	248,9	104,1	76,2	40
2000825	RC1220*D	322,6	175,3	124,5	113

In mm Cyl. Cap. (tons)	Stroke (mm)	Order No.	Oil Cap. (cm ³)	A Retracted Height (mm)	B Extended Height (mm)	C Outside Dia. (mm)	F Base to Port (mm)	G Cyl. Top to Port (mm)	H Piston Rod Dia. (mm)	K Piston Rod Protrusion (mm)	Cyl. Effective Area (cm ²)	700 bar	Product Wt.
740	50	RC7402D	4.811	283	333	430	65	100	280	9	962,0	673,5	304
740	150	RC7406D	14.132	398	548	430	65	100	280	9	962,0	673,5	398
740	250	RC74010D	24.053	508	758	430	65	100	280	9	962,0	673,5	490
965	50	RC9652D	6.283	310	360	490	70	115	320	10	1.256,6	879,7	434
965	150	RC9656D	18.850	420	570	490	70	115	320	10	1.256,6	879,7	551
965	250	RC96510D	31.416	530	780	490	70	115	320	10	1.256,6	879,7	668
1220	50	RC12202D	7.952	330	380	550	80	135	360	10	1.590,4	1.113,3	584
1220	150	RC12206D	23.856	440	590	550	80	135	360	10	1.590,4	1.113,3	731
1220	250	RC122010D	39.761	550	800	550	80	135	360	10	1.590,4	1.113,3	878



CYLINDERS

CYLINDERS