

High Tonnage CYLINDERS R SERIES

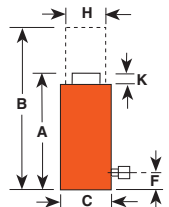
55-565 Ton
Single-Acting
Load-Return

High-tonnage, low cycle,
gravity return.

CYLINDERS



R2802C
ASME B30.1
700 BAR



- Visible indicator band alerts when stroke limit is reached; overflow port ("weep hole") stroke limiter prevents piston from being overextended.
- Alloy heat treated piston and body for reliability and strength.
- Plated piston rod increase corrosion resistance and give superior bearing qualities.

High Tonnage CYLINDER RC SERIES

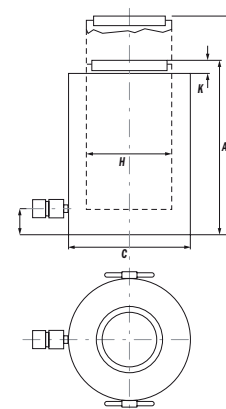
740 - 1220 Ton
Single-Acting,
Load Return

High-tonnage, low cycle,
gravity return.

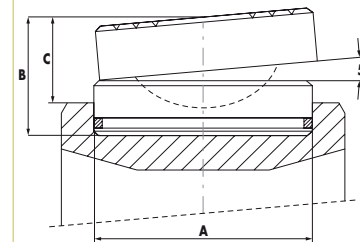


- Overflow port ("weep hole") prevents piston from being overextended under load.
- Alloy heat treated piston and body for reliability and strength.
- Plated piston rod increase corrosion resistance and give superior bearing qualities.

Single-Acting High Tonnage Cylinders



Swivel Cap



Order No.	Used with Cyl. Order No.	A mm	B mm	C mm	Product Wt. kg
2000824	RC740°C, RC965°C	290	140	99	72
2000825	RC1220°C	323	175	124	113

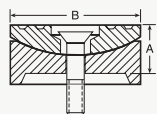
Cyl. Cap. (tons)	Stroke (mm)	Order No.	Oil Cap. (cm ³)	A		B		C		F		H		K		Piston Bore Dia. (mm)	Effective Area (cm ²)	Metric Tons at 700 bar	Weight (kg)
				Retracted Ht. (mm)	Extended Ht. (mm)	Outside Dia. (mm)	Port to Base (mm)	Piston Rod Dia. (mm)	Piston Rod Protrusion (mm)	Retracted Ht. (mm)	Extended Ht. (mm)	Outside Dia. (mm)	Port to Base (mm)	Piston Rod Dia. (mm)	Piston Rod Protrusion (mm)				
55	50,8	R552C	362	125,4	176,2	127,0	25,4	95,3	3,2	95,3	71,2	50,1	12,3						
55	152,4	R556C	1.087	227,0	379,4	127,0	25,4	95,3	3,2	95,3	71,2	50,1	22,7						
55	254,0	R5510C	1.811	328,6	582,6	127,0	25,4	95,3	3,2	95,3	71,2	50,1	32,7						
100	50,8	R1002C	677	139,7	190,5	165,1	25,4	130,2	3,2	130,2	133,1	93,6	23,6						
100	152,4	R1006C	2.030	241,3	393,7	165,1	25,4	130,2	3,2	130,2	133,1	93,6	40,4						
150	50,8	R1502C	1.007	161,9	212,7	204,8	31,8	158,8	3,2	158,8	197,9	139,1	41,8						
150	152,4	R1506C	3.019	263,5	415,9	204,8	31,8	158,8	3,2	158,8	197,9	139,1	68,6						
150	254,0	R15010C	5.032	365,1	619,1	204,8	31,8	158,8	3,2	158,8	197,9	139,1	95,3						
200	50,8	R2002C	1.355	190,5	241,3	235,0	41,3	184,2	3,2	184,2	266,3	187,2	65,8						
200	152,4	R2006C	4.062	292,1	444,5	235,0	41,3	184,2	3,2	184,2	266,3	187,2	100,3						
280	50,8	R2802C	1.861	190,5	241,3	260,4	41,3	215,9	3,2	215,9	365,9	257,5	91,6						
280	152,4	R2806C	5.583	292,1	444,5	276,2	41,3	215,9	3,2	215,9	365,9	257,5	136,7						
355	50,8	R3552C	2.326	231,8	282,6	298,5	54,0	241,3	3,2	241,3	457,2	321,4	137,1						
355	152,4	R3556C	6.975	333,4	485,8	298,5	54,0	241,3	3,2	241,3	457,2	321,4	197,0						
355	254,0	R35510C	11.624	435,0	689,0	298,5	54,0	241,3	3,2	241,3	457,2	321,4	256,5						
430	50,8	R4302C	2.841	263,5	314,3	330,2	63,5	266,7	3,2	266,7	558,5	392,7	199,8						
430	152,4	R4306C	8.520	365,1	517,5	330,2	63,5	266,7	3,2	266,7	558,5	392,7	276,5						
565	50,8	R5652C	3.710	292,1	342,9	377,8	69,9	304,8	3,2	304,8	729,5	512,9	289,7						
565	152,4	R5656C	11.129	393,7	546,1	377,8	69,9	304,8	3,2	304,8	729,5	512,9	389,5						
565	254,0	R56510C	18.548	495,3	749,3	377,8	69,9	304,8	3,2	304,8	729,5	512,9	489,4						

SWIVEL CAPS

Reduce the effects of off center loading. Tilts up to 5 degrees. Radial grooves on top of cap reduce load slippage.

For use with "RC" cylinders

Use with Cyl. No.	Swivel Cap Order No.	Weight (kg)	A (mm)	B (mm)
150-200 ton	420867	4,0	38,1	130,2
280 ton	420868	6,1	44,5	149,2
355 ton	420869	16,8	69,9	195,3
430 ton	420870	23,6	79,4	225,4
565 ton	420871	35,4	92,1	250,8



Reduce the effects of off center loading. Tilts up to 5 degrees. Radial grooves on top of cap reduce load slippage. Notch across face of each cap helps keep loads having a protruding or round shaped centered.



CYLINDERS