

# AF08 Single

**One-chamber universal cleaning system for maintenance cleaning with AirFlow® technology.** Cleans flux management units as well as solder carriers / frames from flux residue, condensate, oil, dust, grease etc.

**Part No. 090508-AF-S**

## Universal maintenance cleaning



### The situation

Clean production tools in the electronics producing industry are vital to achieve the highest possible production quality. Manual cleaning cannot achieve this high standard. Modern reflow-systems are equipped with flux management units (cooling units, filters, heat exchangers, filter panels) which in production are subject to contamination (flux, colophonium). Thorough cleaning helps to re-gain their proper functionality. In a cleaning chamber with AirFlow® -Technology all immersion type of maintenance cleaning can be done: kolb AF08 is a compact, versatile universal-system for the proper cleaning of flux management filtering systems.

### The advantages of AF08 Single

- Plug & Work System (connect, fill, start).
- High cleaning efficiency.
- Short cycle times (15 / 30 / 45 minutes, cycle times freely selectable via PLC).
- No explosion protected area necessary.
- Easy to transport – Use directly at the soldering machine possible.
- 2-stage cleaning detergent, rinsing and active drying is obsolete.
- Skimmer filtration with pre-installed exhaust.
- Permanent 3-stage filtration.
- Robust stainless steel framework.
- Process chambers made of PVC, i.e. no electrolysis possible at weld seams.

### The Service- and security features of AF08 Single

- PLC control and monitoring of cleaning process and maintenance intervals.
- Filter pressure control by PLC.
- Full CE-conformity.
- Automatic shut-down with open cleaning system.

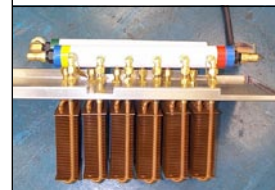
### The general maintenance of AF08

- Change of the saturated cleaning detergent mixture as per individual requirements.
- Cleaning of coarse filter, change of fine filters.

**System must be operated only with qualified 2-stage cleaning detergents!**



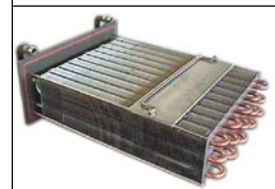
Soltec



BTU



ERSA



Seho

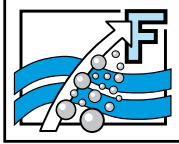


rehm

Applications

**W. Kolb Fertigungstechnik GmbH**  
Karl-Arnold-Str. 12 · D - 47877 Willich  
Further information: [www.kolb-ct.com](http://www.kolb-ct.com)

Tel. +49 (0) 2154 9479 - 38  
Fax +49 (0) 2154 9479 - 47  
e-mail [info@kolb-ct.com](mailto:info@kolb-ct.com)



## AF08 Single

AirFlow® Unit



AirFlow® Unit



Tool tray



Control panel



Exhaust control



### The working principle\*

The kolb AF08 Single one-chamber cleaning system consists of an independent AirFlow® cleaning module (no water / waste water connection). Parts to be cleaned (cooling units, filters, plates, carriers) are positioned on the immersion basket on top of the heavy-duty air system when the lid is opened. When closing the gas spring supported lid the immersion basket will be submerged into the cleaning detergent. The goods in the detergent will be cleaned with the AirFlow®-Technology during the pre-set cycle time.

**Filtration:** The removed contamination ascending to the surface by the air flow will be directed to the skimmer filtration and via a 3- stage loop- filtration (coarse filter > 1mm, filter 1 >100 µm filter 2 >25 µm) where they will be filtered out. The saturation of the filter stages will be controlled and indicated via PLC.

**Cleaning cycle:** 3 different cycle times (factory preset 15 / 30 / 45 min.) can be freely programmed with the PLC. After the end of the cleaning cycle and opening of the lid, the immersion basket rises automatically again and the products dry under ambient temperature air. Alloy steels, aluminium should be rinsed externally with tap water or kolb RM 24 (kolb rinsing detergent).

### AF08 Single has the following elements:

Modul 1: cleaning chamber 1 – basic module without external rinsing cycle: Containers/ cyclones/ tubings can suitably be cleaned in the kolb cleaning system AF09 with external rinsing

The foot print of the system corresponds to a standard Euro-type pallet and it can be comfortably transported to location/reflow-soldering systems using a pallet truck and it is ready-to-operate immediately.

### Technical data:

Main power supply	:	400 V AC, 16 A CEE; 50 / 60 Hz
Power dissipation	:	approx. 1,5 kW
Ambient temperature (min)	:	approx. 20°C
Noise	:	< 65 dB (A)
Compressed air supply	:	approx. 6-10 bar, 110 / l min
System weight	:	approx. 300 kg (empty), 500 kg (filled)
Process chamber capacity	:	approx. 200 l (cleaning detergent mixture)
Max. product size	:	900 mm x 450 mm x 310 mm (L x B X H)
System dimension	:	L: 1.250mm, W: 800mm, H: 1.000mm, open lid: 1.500 mm

**W. Kolb Fertigungstechnik GmbH**  
Karl-Arnold-Str. 12 · D - 47877 Willich  
Further information: [www.kolb-ct.com](http://www.kolb-ct.com)

Tel. +49 (0) 2154 9479 - 38  
Fax +49 (0) 2154 9479 - 47  
e-mail [info@kolb-ct.com](mailto:info@kolb-ct.com)

\*Patent technology. All rights for changes reserved that lead to technical improvement.